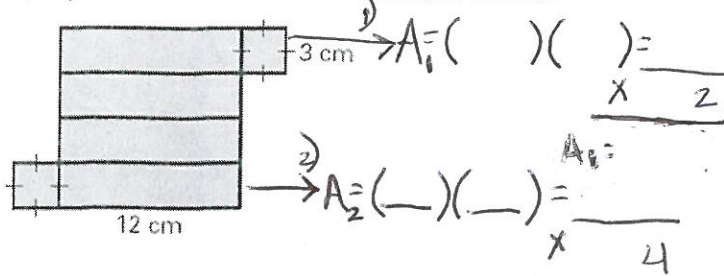


Failure to show all work and write in complete sentences will result in a LaSalle!

1) A prism has been deconstructed below.



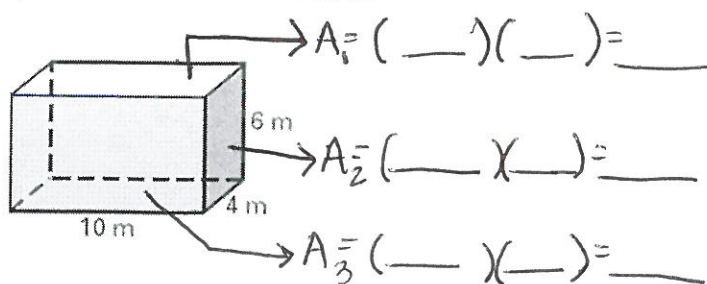
a. Find the surface area.

$$(A_1) + (A_2) =$$

(Total Surface Area)

b. Find the volume. $(L)(W)(H) = V$

2) Use the dimension below.

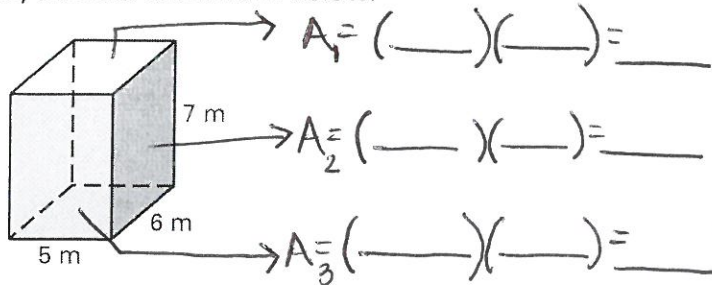


a. Find the surface area.

$$(A_1) + (A_2) + (A_3) = \text{(Total Surface Area)}$$

b. Find the volume. $(L)(W)(H) = V$

3) Use the dimension below.

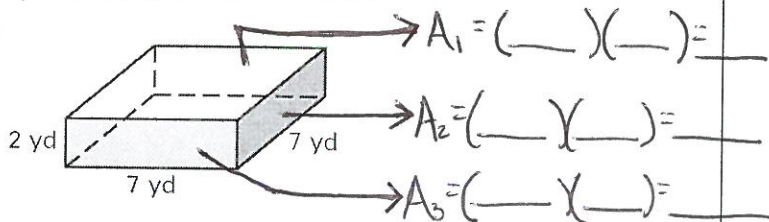


a. Find the surface area.

$$(A_1) + (A_2) + (A_3) = \text{(Total Surface Area)}$$

b. Find the volume. $(L)(W)(H) = V$

4) Use the dimension below.

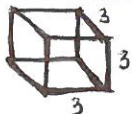


a. Find the surface area.

$$(A_1) + (A_2) + (A_3) = \text{(Total Surface Area)}$$

b. Find the volume. $(L)(W)(H) = V$

5) A cube has side lengths of 3 cm.



a. Find the surface area.

b. Find the volume.

6) A cube has a volume of 64 cm^3 . **REMEMBER** All sides are equal!

a. Find the length of one side.

b. Find the surface area.